

Patient Testing Supplies



Contact Sales Support at 800.655.1133 to order supplies
Outside U.S.: Please contact your local MGC Diagnostics distributor for support

MGC Diagnostics supplies are the *only* recommended supplies for use with MGC Diagnostics equipment to achieve accurate, validated test results that meet ATS and ERS standards.

UNIVERSAL TESTING SUPPLIES

FLOW SENSOR



preVent® flow sensor
PN: 758100-004
qty: 24 per box

NOSE CLIPS



Nose Clip
DISPOSABLE,
clear: extra padded poly
PN: 536007-003
qty: 100 per pack



Nose Clip
DISPOSABLE, white: no pad
PN: 536007-001
qty: 100 per pack

NOSE CLIPS



Nose Clip, Parallel
DISPOSABLE
PN: 536018-001
qty: 100 per pack



Nose Clip, Parallel-R
PN: 536019-001
qty: 10 per pack
each reusable clip comes with
10 pairs of replacement pads



Replacement Pads
for Parallel-R
PN: 536020-001
qty: 100 pads (50 pairs)

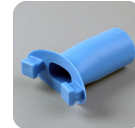
MOUTHPIECES



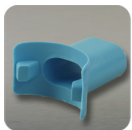
Mouthpiece
Adult Medium, **DISPOSABLE**
use with preVent flow sensor OR
preVent or preVent II filter
PN: 536006-004
qty: 100 per pack



Mouthpiece, Adult Medium
General purpose, use with
preVent flow sensor
PN: 758300-001
qty: 50 per pack



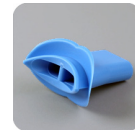
Mouthpiece, Adult Medium
use with preVent flow sensor OR
preVent II filter
PN: 536101-002
qty: 10 per pack



Mouthpiece, Adult Large
use with preVent flow sensor
PN: 536006-001
qty: 10 per pack



Mouthpiece, Adult Small
use with preVent flow sensor
PN: 536006-003
qty: 10 per pack



Mouthpiece, Pediatric
use with pediatric adapter
and rubber coupler
PN: 536006-002
qty: 10 per pack

OTHER



preVent® Handle
PN: 543370-001
qty: 1 each



Pediatric Adapter
use with pediatric mouthpiece
and rubber coupler
PN: 535082-001
qty: 1 each



Rubber Coupler
use for syringe calibration of
preVent flow sensor
PN: 536003-001
qty: 1 each



Rubber Coupler
use for syringe calibration of
preVent filter
PN: 536170-001
qty: 1 each

PULMONARY TESTING SUPPLIES

KITS



Kit 1 - recommended
preVent II™ filter (536713-002)
& Nose Clip (536007-003)
PN: 536719-001
qty: 100 per box



Kit 2 - recommended
preVent II™ filter (536713-002), Nose Clip
(536007-003) & Mouthpiece (536006-004)
PN: 536723-001
qty: 100 per box



III PULMONARY TESTING SUPPLIES, [CONT'D]

FILTERS		<p>preVent II™ filter <i>Comfort fit oval mouthpiece with lip grip</i> PN: 536713-002 qty: 100 per box</p>		<p>preVent® filter <i>round mouthpiece design</i> PN: 536713-001 qty: 100 per box</p>		
	OTHER		<p>BreathPath™ patient circuit PN: 758200-001 qty: 12 per box</p>		<p>GC Column PN: 536009-001 qty: 1 each</p>	

III GAS EXCHANGE TESTING SUPPLIES

FLOW SENSORS		<p>DirectConnect™ metabolic flow sensor <i>keyed</i> PN: 750066-003 qty: 24 per box</p>		<p>DirectConnect™ metabolic flow sensor <i>non-keyed</i> PN: 750050-003 qty: 24 per box</p>	MOUTHPIECE		<p>Mouthpiece Adult Medium <i>with saliva trap</i> PN: 758301-001 qty: 50 per pack</p>
	FACE MASKS		<p>preVent® face mask <i>x-small</i> PN: 670009-005 qty: 12 per pack</p>			<p>preVent® face mask <i>small</i> PN: 670009-001 qty: 12 per pack</p>	
		<p>preVent® face mask <i>large</i> PN: 670009-003 qty: 12 per pack</p>		<p>preVent® face mask <i>assorted: 6-S, 12-M, 6-L</i> PN: 670009-004 qty: 24 per pack</p>		<p>Coupler <i>use with preVent® face mask</i> PN: 670010-003 qty: 4 per pack</p>	
OTHER			<p>DirectConnect Adapter <i>use with face mask and calibration syringe</i> PN: 701240-001 qty: 1 each</p>		<p>Umbilical Adapter <i>use with DirectConnect metabolic flow sensor (3 prong)</i> PN: 701067-001 qty: 1 each</p>		<p>Umbilical Adapter <i>use with DirectConnect metabolic flow sensor (4 prong, for use on Ultima Series PFX system)</i> PN: 701067-002 qty: 1 each</p>

MGC DIAGNOSTICS CORPORATION, through its subsidiary Medical Graphics Corporation
 350 Oak Grove Parkway St. Paul, Minnesota USA 55127-8599

© 2017 MGC Diagnostics Corporation or one of its affiliates. All rights reserved.

All specifications subject to change without notice. Products may vary from those illustrated.

MGC Diagnostics and its affiliates are equal opportunity/affirmative action employers committed to cultural diversity in the workforce.

Part# 060134-001 RevE